

Quick Reference:

Mac All-In-One

**Installing a TSM and DRC
INSIGHT on a Single Mac
for ACCESS for ELLs 2.0 or
Screener Testing**



Configuring a TSM and INSIGHT On a Single Mac for WIDA Testing

Introduction

This Quick Reference guide steps a new user through the three parts of installing and configuring the Testing Site Manager (TSM) and DRC INSIGHT on a single Mac computer for online testing with ACCESS for ELLS 2.0 or Screener.

- Part 1: Install a TSM on the Mac (OS X or macOS)
- Part 2: Create a Configuration for the Mac
- Part 3: Install DRC INSIGHT on the Mac and Register the Mac to the Configuration

❗ Important:

- These instructions apply to creating a specific testing environment in which DRC INSIGHT and a TSM are installed on a single Mac (OS X or macOS) computer. For more general installation and configuration instructions, refer to the WIDA version of the *DRC INSIGHT Technology User Guide*.
 - These instructions assume that DRC INSIGHT and/or a TSM are not already installed on the device. If DRC INSIGHT or a TSM *is* installed, please call DRC Customer Service at 1-855-787-9615.
 - You must be a Mac System Administrator to install a TSM or DRC INSIGHT.
 - You may want to print these instructions—while DRC INSIGHT is running (Part 3), you cannot access other applications on your Mac.
-

System Requirements

Both the TSM and the DRC INSIGHT software may be installed on a single Mac to test one student at a time (one student testing concurrently) that meets the following system requirements:

RAM: 2 GB available

Processor: 2x dual-core i5 at 2.4 GHz


Disk Space: 20 GB available

Configuring a TSM and INSIGHT On a Single Mac for WIDA Testing

Part 1: Install a TSM on the Mac (OS X or macOS)

DRC provides an easy-to-use wizard to install the TSM software that provides the caching capabilities required for ACCESS for ELLs 2.0 and Screener testing.

ⓘ **Important:** Install the TSM software on a computer that will be powered on when test content is automatically updated. If the computer is not on or is unavailable, it will not be updated. Whenever you restart a computer that has the TSM software installed, or anytime you plan to use the TSM for testing, verify that the TSM software and test content are up to date before you attempt to test.

1. To launch the wizard and start the installation, sign in to the WIDA Assessment Management System (WIDA AMS) at <https://www.wida-ams.us>, using the Mac (OS X) computer and a Chrome or Firefox browser, open the **All Applications** menu bar, select **General Information–Technology Downloads**, and click on the **Testing Site Manager (TSM) DRC INSIGHT Macinstosh Download** icon (). If you cannot access this link, call DRC Customer Service at 1-855-787-9615.

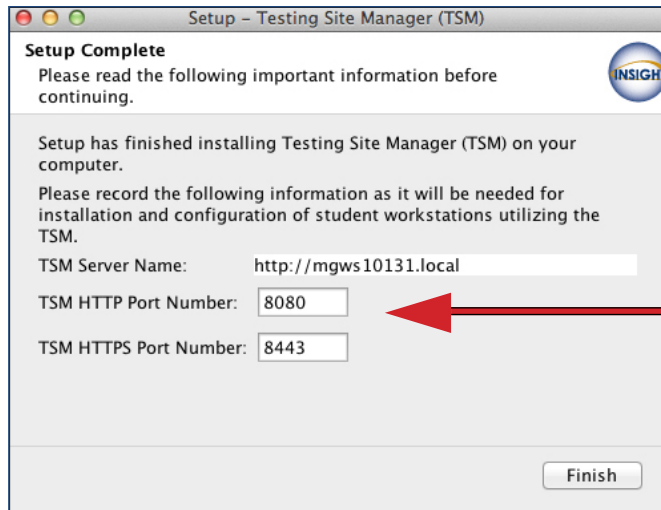
ⓘ **Important:** Before you download, click **View System Requirements** from the Technology Downloads page to verify that your Mac meets the system requirements for both DRC INSIGHT and the TSM.

2. After you download the installation program, double-click on the downloaded **TESTING_SITE_MANAGER_Setup.dmg** file to open the download package. click on the **Testing Site Manager (TSM) Installer.app** to launch the wizard and start the installation. The Welcome screen displays for the Testing Site Manager (TSM) Setup Wizard. Click **Next** to continue.
3. The License Agreement window displays. Click **I accept the agreement** and click **Next**.
4. The Select Configuration Options window displays. Verify that the correct caching values are checked for Enable Content Caching (required) and Enable Response Caching (optional and only available for the Writing tests). Click **Next**.
5. The Automatic Update window displays. Verify that **Enable Automatic Update** (the default value) is selected. Click **Next**. During installation, a window displays to indicate the progress of the installation.

Configuring a TSM and INSIGHT On a Single Mac for WIDA Testing

Part 1: Install a TSM on the Mac (cont.)

After the installation completes, the Setup Complete window displays.

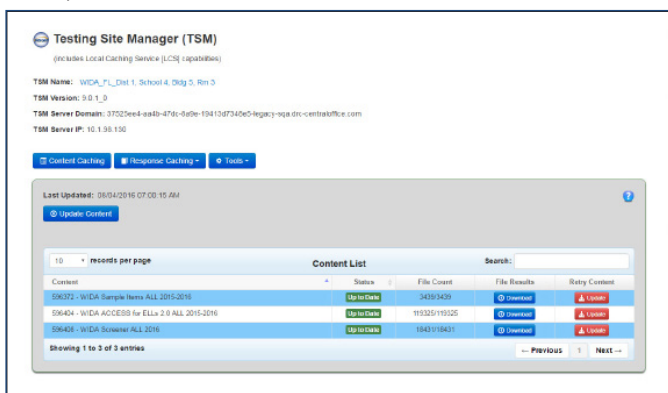


IMPORTANT: Record the TSM port numbers before you click Finish. You need this information to configure your devices in the Central Office Services - Device Toolkit in Part 2.

6. Click **Finish** when you are ready.
7. After the installation is complete, open a supported browser (Firefox or Chrome) and enter one of the following addresses:
 - If you used the default http port number in step 6, enter **http://localhost:8080**.
 - If you changed the http port number in step 6, replace 8080 with the port number you specified.

Note: The TSM software may take several minutes to display the first time.

8. When the Enter Testing Site Manager Name window displays, enter a name that will help you remember the location of the TSM machine in the TSM Name field and click **Save**. DRC recommends that you include some combination of WIDA, the state, district, school, and location (building and/or room number) of the TSM. You can start Part 2 while the TSM is loading content.



9. The TSM displays. Verify that the test content is up to date (see the Status field). If it is not, click **Update Content**. If it is, continue to Part 2.

Configuring a TSM and INSIGHT On a Single Mac for WIDA Testing

Part 2: Create a Configuration for the Mac

You use the Central Office Services - Device Toolkit to create a configuration to use the Mac for testing with DRC INSIGHT and to indicate the TSM to use for testing.

1. To start the Central Office Services - Device Toolkit, from WIDA AMS at <https://www.wida-ams.us> (log in again if necessary), open the **All Applications** menu bar and click **Device Toolkit**.

Note: You must have the Device Toolkit permission in WIDA AMS to access this link. If you do not see this link, call DRC Customer Service at 1-855-787-9615.

2. When the Central Office Services - Device Toolkit Select Site page displays, select the **Add New Configuration** tab to create a new configuration.
3. When the Configuration Information page displays, enter a meaningful name for the configuration to help you categorize and organize your devices for testing.

Central Office Services - Device Toolkit | Configurations | Add New Configuration | Help: Yes

Configure Central Office Service

Previous 1 2 Next

Configuration Information

Once you have finished configuring this device, the configuration settings you have chosen will be saved. If other Central Office Service devices will need the same settings, you will be able to reuse this configuration for them as well. Please enter a name for this configuration. Try to use a name that will help you and others to select it in the future. Include your district and/or school in the name.

Configuration Name (required):

Testing Devices Configuration

Please update all of the information that applies to the testing devices associated with this configuration.

Enable Auto Updates
Allows testing devices to update automatically.

Proxy Host No
Please enter a valid url to your http/https proxy which testing devices will use to communicate with the Internet. Only needed when using a proxy server.

Proxy Path:

4. Check **Enable Auto Update** to enable automatic DRC INSIGHT software updates and click **Next**.
5. Select a testing program from the Testing Program drop-down menu and a school using the Site filter (enter at least three characters) and click **Add Location**.

Previous 1 2 Next

Locations

Choose a Testing Program and, if prompted, a State, then type at least three letters of the name of a District or a School to select the Site. Once you have chosen a Site, click Add Location. At least one location is required. To change an existing single location, first add the new location, then remove the original.

Testing Program
Site

Configuring a TSM and INSIGHT On a Single Mac for WIDA Testing

Part 2: Create a Configuration for the Mac (cont.)

- To specify a server to use for test content caching (required) toggle TSM Content Caching to **Yes**. In the Content Caching URL: field enter the following string to identify this machine as the TSM server.

https://localhost.drc-centraloffice.com:8443/

Note: The default https port number is **8443**. If you specified a different https port in Part 1–Step 6, replace 8443 with the port number that you used.

Set up for:

WIDA > WD >> Drc Use Only - Sample District Me Remove

TSM Response Caching is Enabled

TSM Content Caching is Enabled for Content Cache Only

TSM Content Caching **Yes**

Are using a TSM for content caching for this location? Central Office Content Hosting will not be used if enabled.

Please provide the url for the TSM that will be used for content caching for this location by testing devices.

Content Caching Url:

https://localhost.drc-centraloffice.com:8443/

Content Cache Usage Choose whether the content cache TSM is only used for load simulation or content caching or both.

Content Cache Only

TSM Response Caching **Yes**

Are using a TSM for response caching for this location? Works with Content Hosting or a TSM only location.

Please provide the url for the TSM that will be used for response caching for this location by testing devices.

https://localhost.drc-centraloffice.com:8443/

- From the Content Caching Usage drop-down menu, select **Content Caching Only**. To specify the same server to use for test response caching (optional and only available for WIDA Writing tests), toggle TSM Response Caching to **Yes** and enter the information that you entered in step 6 in the field that appears.
- Click **Next** to save your changes. When the Save Configuration dialog box appears, click **Continue**. The Central Office Services - Device Toolkit dashboard reappears with your new configuration added. Record (or copy) the device's ORG Unit ID and continue to Part 3.

All Applications ▶

Central Office Services - Device Toolkit Configurations Add New Configuration

WIDA > WD > Drc Use Only - Sample District Me Change

You successfully created configuration New WIDA Configuration.

Add and remove charts: Configurations Testing Devices

Configurations: Total: 1

Testing Devices: Total: 0

choose a search type...

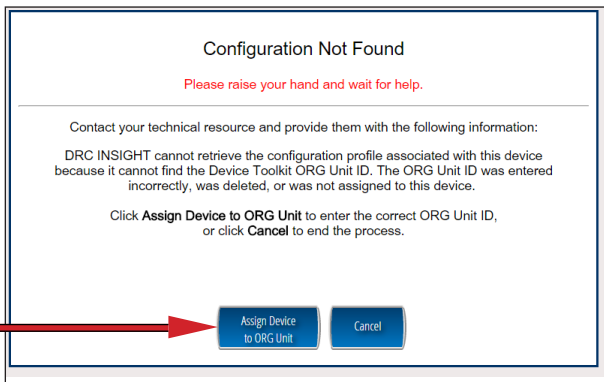
New WIDA Configuration TSM	Service Devices: (0)	Testing Devices: (0)	Location: (1)
Org Unit ID: 1031448570			

IMPORTANT: Record (or copy) the device's ORG Unit ID (located next to the configuration name in the dashboard), which is case-sensitive. You need this information to register the device when you install DRC INSIGHT in Part 3.

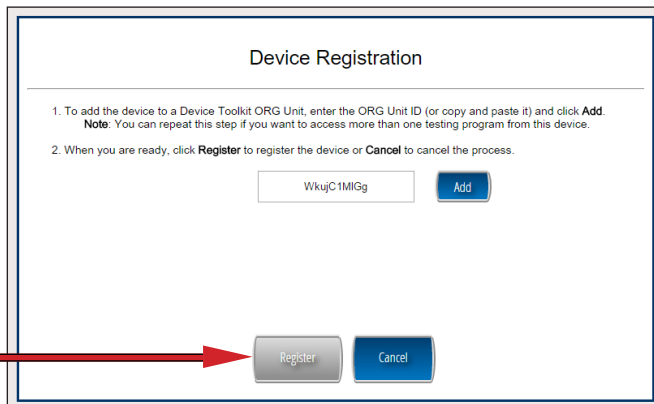
Configuring a TSM and INSIGHT On a Single Mac for WIDA Testing

Part 3: Install DRC INSIGHT on the Mac and Register the Mac to the Configuration

1. DRC provides an easy-to-use wizard to install the DRC INSIGHT software for Mac (OS X and macOS). To launch the wizard and start the installation, sign in to the WIDA AMS using the same Mac, open the **All Applications** menu bar, select **General Information–Technology Downloads**, and click on the DRC INSIGHT Mac (OS X) Download icon (📄).
2. After you download the installation program, double-click on the **DRC_INSIGHT_Setup.pkg** icon to start an installation. The Welcome to the DRC INSIGHT Installer window displays. Click **Continue**.
3. The Software License Agreement window displays. Click **Continue** and **Agree**.
4. The Select Destination window displays, indicating the amount of disk space the installation will require. Click **Install**.
5. The Standard Install on “Macintosh HD” window displays. Click **Install**. After you enter your username and password and click **Install Software**, the installation begins.
6. After the installation, a summary window indicates the status of the installation. Click **Close**.
7. The Configuration Not Found page displays. Click **Assign Device to ORG Unit**.



8. To successfully register the device with DRC INSIGHT, you need to use the device’s ORG Unit ID that you recorded or copied from the Central Office Services - Device Toolkit. When the Device Registration page displays, enter the device’s ORG Unit ID and (or paste it from the clipboard if you copied it), and click **Add**. This registration process tells the Mac which TSM to use for testing.

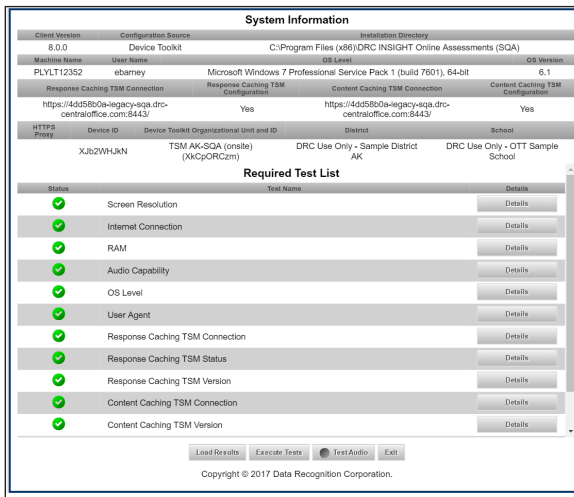


9. When you have added the ORG Unit, click **Register**.

Configuring a TSM and INSIGHT On a Single Mac for WIDA Testing

Part 3: Install DRC INSIGHT on the Mac and Register the Mac to the Configuration (cont.)

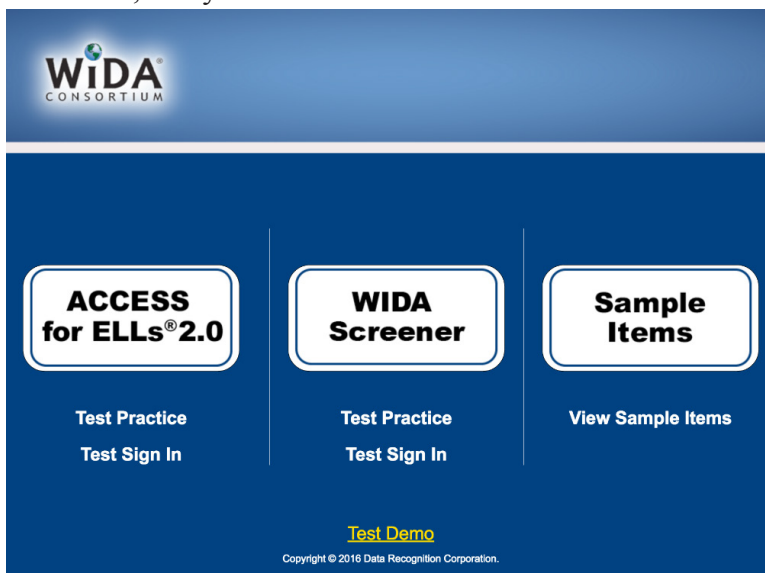
When the Mac registers, the System Readiness Check will launch.



10. When the System Readiness Check launches, the System Information screen displays. If the icons are green, the TSM is configured and ready (see the Note below). If not, click **Execute Tests** to rerun the System Readiness Check and attempt to correct the results. Click **Details** next to any test you need more information about. If you cannot correct the results, call DRC Customer Service at 1-855-787-9615. When you are ready, click **Exit**.

Note: If you did not enable Response Caching for the TSM (step 7 in Part 2), the TSM Response Caching icons will not display as green.

11. When the device is successfully registered with DRC INSIGHT, the main testing page displays. From this page you can try Test Practice or test using your DRC INSIGHT log-in information, view sample test items, or try test demos.



You can display the System Readiness Check by clicking the checkmark in the lower left side and entering the System Readiness Check Access Code of **7745**.

The installation adds a single shortcut to DRC INSIGHT on your desktop that you also can use to sign in to the Test Practice, Test Demo, and tests.