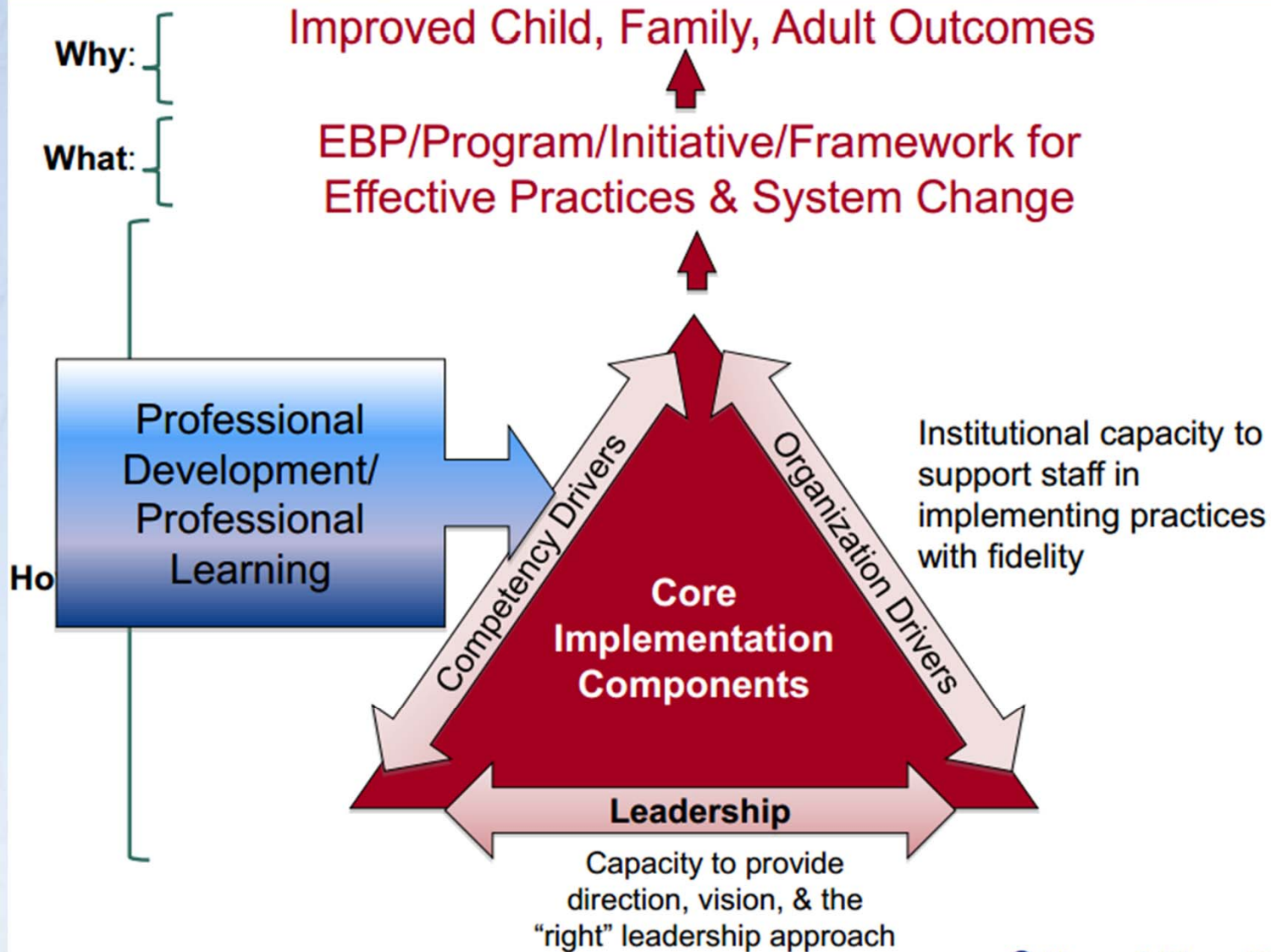




EEC's Comprehensive Approach to Supporting Instructing, and Assessing Dual Language Learners: *WIDA-EEC Partnership Activities*



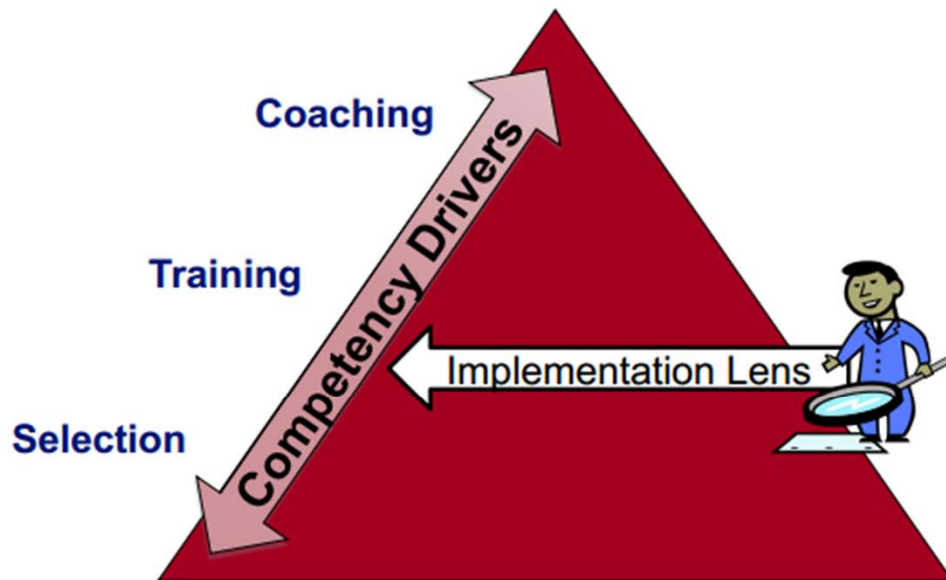
**Supporting Young Dual Language Learners' School
Readiness and Beyond
FEBRUARY 27, 2014**



Improved Child, Family, Adult Outcomes

EBP/Program/Initiative/Framework for
Effective Practices & System Change

Performance Assessment



**Implementation
Drivers =
Infrastructure**



Staff Training & Coaching

TRAINING COMPONENTS	OUTCOMES (% of Participants who Demonstrate Knowledge, Demonstrate new Skills in a Training Setting, and Use new Skills in the Classroom)		
	Knowledge	Skill Demonstration	Use in the Classroom
Theory and Discussion	10%	5%	0%
..+Demonstration in Training	30%	20%	0%
...+ Practice & Feedback in Training	60%	60%	5%
...+ Coaching in Classroom	95%	95%	95%



**What does this mean for
Massachusetts Early
Education & Care partners?**



Professional Development: What



- **Train and support** Master Cadre, Program Trainers, and Practitioners
- Train and support Master Cadre as program **coaches** (pending add'l funding)
- Provide information and receive feedback from **parents**
- Collect program data to determine fidelity of **program implementation** (pending add'l funding)
- Collect data to determine **next steps**



Professional Development: How



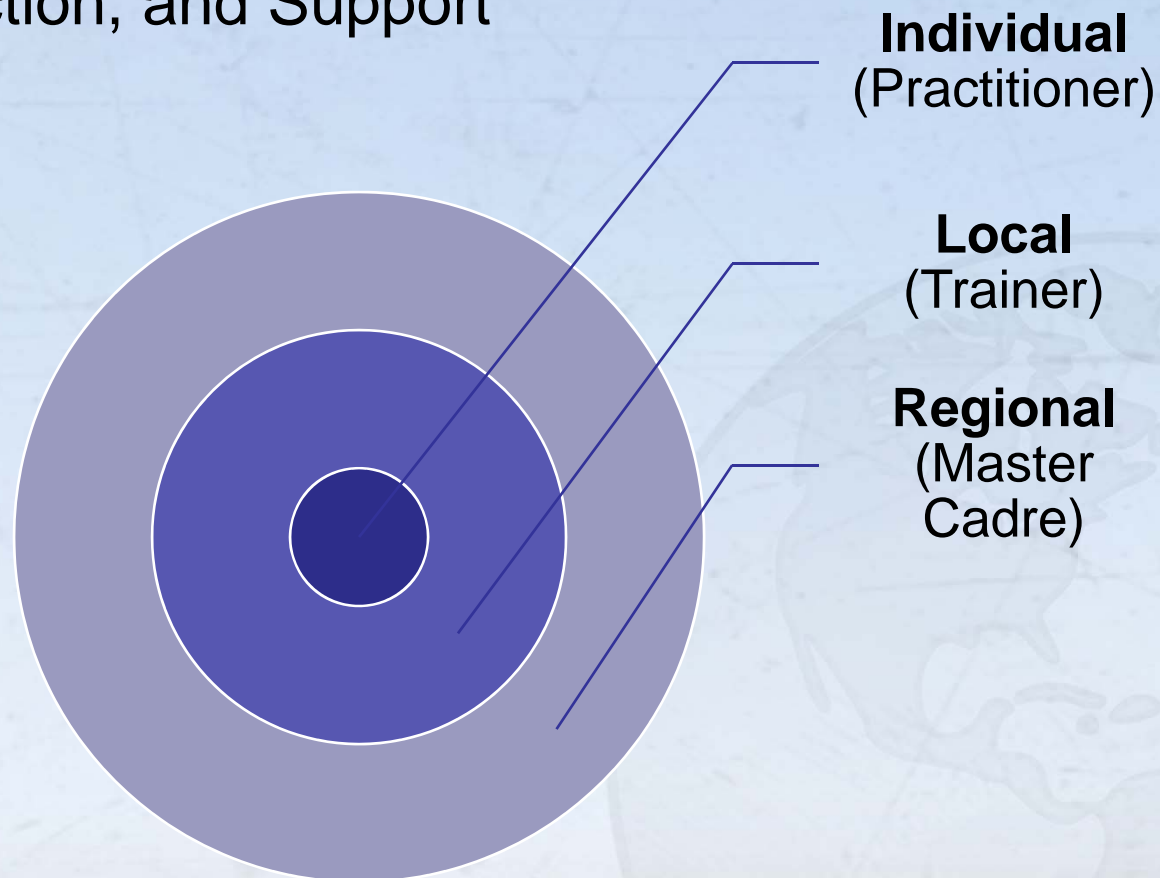
- Involve **stakeholders** from all statewide EEC systems

- Build on statewide and regional cross-sector EEC **training/technical assistance systems**



- Utilize a **regional master cadre** approach

WIDA Staff: Training, Technical Assistance,
Data Collection, and Support





Professional Development: How



Regional Master Cadre	Program Trainers	Practitioners
<ul style="list-style-type: none">• Receive training, technical assistance, and training support from WIDA staff	<ul style="list-style-type: none">• Receive training and technical assistance from Master Cadre	<ul style="list-style-type: none">• Receive training and technical assistance from Program Trainers
<ul style="list-style-type: none">• Regional cross-sector trainers (e.g., train Program Trainers from various programs)	<ul style="list-style-type: none">• Trainers at various programs (e.g., trainer at ABC Child Care or Head Start)	
<ul style="list-style-type: none">• Collect training and program data; assist with data-based decisions	<ul style="list-style-type: none">• Collect training data	<ul style="list-style-type: none">• Provide program data
<ul style="list-style-type: none">• Have potential to become trained coaches that support program implementation		



E-ELD Guidelines Training

- Participation in ...
 - 3 webinars
 - 2-day workshop
 - Ongoing monthly technical assistance
 - Data collection

Coach Training

(pending additional funding)

- Participation in ...
 - 3 webinars
 - 3-4-day workshop
 - Ongoing monthly technical assistance
 - Data collection



Master Cadre members must ...



- Participate in all three webinars on **March 13, March 27, and April 10, 2014**
- Participate in a **pre-workshop introductory webinar** (dates TBD)
- Attend the **two-day workshop**
- Participate in monthly **technical assistance** discussions

**Activities related to coaching are not included;
pending additional funding*



Two-day Workshop Dates



Tentative Dates by Region:

- **BOSTON:** July 14-15, 2014
- **SOUTHEASTERN:** August 4-5, 2014
- **CENTRAL:** September 8-9, 2014
- **WESTERN:** October 6-7, 2014
- **NORTHEASTERN:** November 3-4, 2014



Family Focus Groups



Purpose

- To share information on language development with families
- To gather information on ways families foster language development and school readiness

Audience

- Families of children who are learning two or more languages



Family Focus Groups



Tentative Dates by Region:

- **BOSTON:** May 8, and July 16, 2014
- **CENTRAL:** May 6 and September 11, 2014
- **SOUTHEASTERN:** May 7 and August 7, 2014
- **WESTERN:** October 9, 2014
- **NORTHEASTERN:** November 6, 2014



Three-Year Plan



Year	Activities
2014	<ul style="list-style-type: none">• Statewide stakeholder planning• Begin data collection• Webinar series• Recruit master cadre (MC)• Regional training for MC• Ongoing monthly technical assistance• Family focus groups
2015	<ul style="list-style-type: none">• MC trains Program Trainers with WIDA support• Ongoing monthly technical assistance• Data collection continues• MC selects coaching sites (pending add'l funding)• MC receives coaching training (pending add'l funding)• Family focus groups
2016	<ul style="list-style-type: none">• Program Trainers train practitioners• Ongoing monthly technical assistance• Program coaching and implementation (pending add'l funding)• Data collection, analysis and recommendations• Family focus groups



Collaboration

