

# *EEC, WIDA & RETELL*



MASSACHUSETTS DEPARTMENT OF  
ELEMENTARY AND SECONDARY  
EDUCATION

Slide 2

★ **Rethinking Equity and Teaching for English Language Learners**

**RETELL?**



MASSACHUSETTS DEPARTMENT OF  
ELEMENTARY AND SECONDARY  
EDUCATION

---

---

---

---

---

---

---

---

---

---

Slide 3

**Highlights**

- ★ Why RETELL?
- ★ SEI Endorsement?
- ★ WIDA



Massachusetts Department of Elementary and Secondary Education

---

---

---

---

---

---

---

---

---

---

Slide 4

**PDF of this presentation**  
<http://qrs.ly/ku3tk31>  
 ★ available until 6:00 p.m.




Massachusetts Department of Elementary and Secondary Education

---

---

---

---

---

---

---

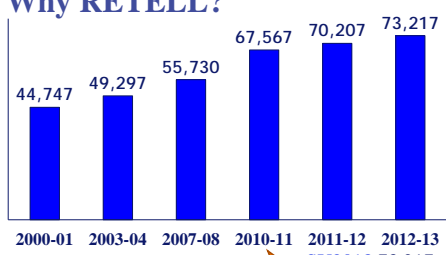
---

---

---


Slide 5

**Why RETELL?**



Year	Number of ELLs
2000-01	44,747
2003-04	49,297
2007-08	55,730
2010-11	67,567
2011-12	70,207
2012-13	73,217

Massachusetts' ELLs  
 SY2000: 44, 747 ELLS    SY2013 73,217    67%



Massachusetts Department of Elementary and Secondary Education

---

---

---

---

---

---

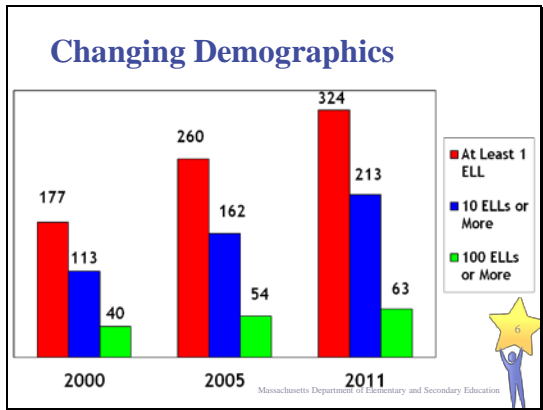
---

---

---

---

Slide 6




---

---

---

---

---

---

---

---

---

---

Slide 7

### Why RETELL?

**Category Training Review:**  
2011, DESE determined the need to update Category Training to reflect recent research.

**U.S. Department of Justice (DOJ):**

- ★ Determined that the State failed to take appropriate action to overcome ELL's language barriers by not defining and mandating the basic preparation and training that teachers and other educators must have to provide SEI.
- ★ U.S. DOJ's involvement accelerated pace of Department's work.

Massachusetts Department of Elementary and Secondary Education

---

---

---

---

---

---

---

---

---

---

Slide 8

### A Vision for Equity

The **RETELL Initiative** is guided by the principle that English Language Learners are entitled to *equity of access to effective teaching and learning*. By preparing educators to best serve the multifaceted needs of the ELL population, we work towards key ESE goals: closing proficiency gaps and ensuring *all* students are college and career ready.

Massachusetts Department of Elementary and Secondary Education

---

---

---

---

---

---

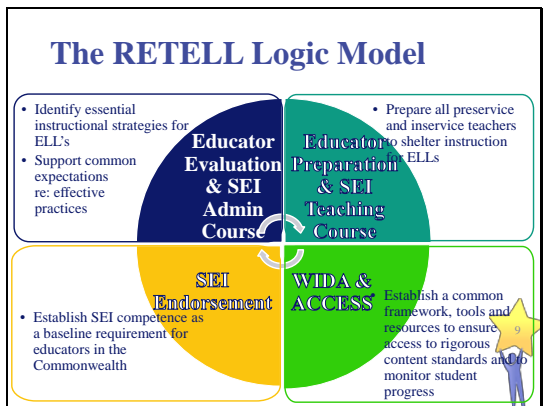
---

---

---

---

Slide 9




---

---

---

---

---

---

---

---

---

---

Slide 10

## SEI Endorsement

### It's the Law

- ★ This regulatory requirement applies to Incumbent Core Academic Teachers of ELLs, and Principals/Assistant Principals and Supervisors/Directors who supervise or evaluate core academic teachers of ELLs.
- ★ *Between 2012-16, the above teachers and building administrators are required to earn SEI endorsement at different times based on their assignment to a cohort year.*

Massachusetts Department of Elementary and Secondary Education



---

---

---

---

---

---

---

---

Slide 11

## SEI Endorsement

### What is it?

### Regulatory Requirement Involving Individual Educators and DESE

- ★ Credential is required of Core Academic Teachers who have ELLs in their classrooms and the administrators who supervise & evaluate them in public schools, including collaboratives and charter schools.

Massachusetts Department of Elementary and Secondary Education



---

---

---

---

---

---

---

---

Slide 12

## Endorsement: New Teachers

### On or after July 1, 2014:

- ★ Applicants for an initial license as a core academic teacher, or as a principal/assistant principal, or as a supervisor/director of core academic teachers must qualify for an SEI Endorsement.

Massachusetts Department of Elementary and Secondary Education



---

---

---

---

---

---

---

---

Slide 13

## Core Academic Teachers of ELLs?

### Who Must Earn the SEI Endorsement?

#### Pre-K-12 Teachers

- ★ Early childhood and elementary teachers
- ★ Teachers of students with moderate disabilities
- ★ Teachers of students with severe disabilities

#### Subject Specific Teachers of ELLs

- ★ English, reading or language arts,
- ★ Mathematics,
- ★ Science,
- ★ Civics and Government
- ★ Economics
- ★ History, and Geography

Massachusetts Department of Elementary and Secondary Education



---

---

---

---

---

---

---

---





**Q & A**

**Comments**



MASSACHUSETTS DEPARTMENT OF  
ELEMENTARY AND SECONDARY  
EDUCATION

22

Massachusetts Department of Elementary and Secondary Education

---



---



---



---



---



---

**Contact Info**

★ Shawn Slakk  
 RETELL Coordinator  
 sslakk@doe.mass.edu


★ PDF of this presentation  
 <http://qrs.ly/ku3tk31>


*This presentation will be available at this link until 6:00 pm.*




Massachusetts Department of Elementary and Secondary Education

**Contact Info**

★ Registrar  
 [registrar@does.mas.edu](mailto:registrar@does.mas.edu)

★ General Questions to the Department  
 <http://qrs.ly/xx3tk09>



Massachusetts Department of Elementary and Secondary Education

**Contact Info**

Regional RETELL Specialist by DSAC

★ Barbara Cohen [bcohen@doe.mass.edu](mailto:bcohen@doe.mass.edu)  
 ★ Greater Boston  
 ★ Central

★ Alexis Glick [aglick@doe.mass.edu](mailto:aglick@doe.mass.edu)  
 ★ Northeast  
 ★ Berkshires

★ Joni Magee [jmagee@doe.mass.edu](mailto:jmagee@doe.mass.edu)  
 ★ Southeast  
 ★ Pioneer Valley



Massachusetts Department of Elementary and Secondary Education